

MONTHLY MEMBERSHIP PROGRESS REPORT

District 17 N

Results as of: 6/30/2020

GMT:

LOCATION KANSAS

GMT CA

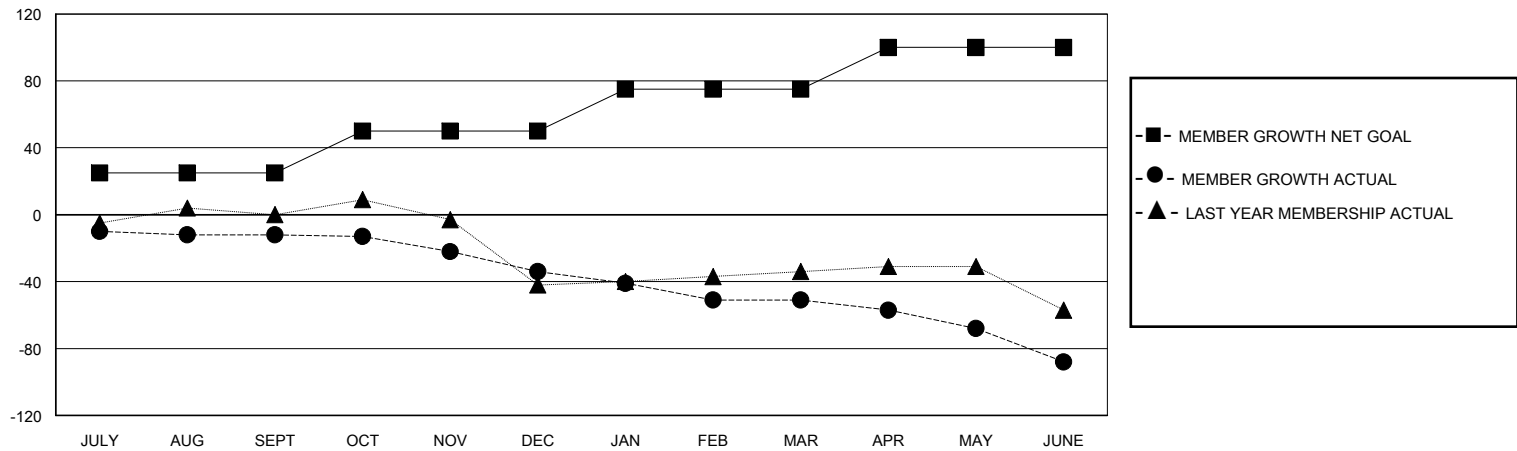
Clubs			
RESULTS FOR 2019-2020			
QUARTER	NEW CLUB GOAL	NEW CLUBS	DROPPED CLUBS
JULY/AUG/SEPT	0	0	0
OCT/NOV/DEC	0	0	2
JAN/FEB/MAR	0	0	0
APR/MAY/JUNE	1	0	0

Members			
RESULTS FOR 2019-2020			
QUARTER	MEMBER GROWTH NET GOAL	MEMBER GROWTH ACTUAL	DROPPED MEMBERS ACTUAL (including transfers)
JULY/AUG/SEPT	25	25	34
OCT/NOV/DEC	25	21	40
JAN/FEB/MAR	25	34	50
APR/MAY/JUNE	25	9	43

GOALS AND ACTUAL NEW CLUBS CUMULATIVE



GOALS AND ACTUAL MEMBERS CUMULATIVE



DROPPED CLUBS: 2

35 CLUBS OF 74 ADDED 1 OR MORE NEW MEMBERS

GENDER DISTRIBUTION

MALE 1,056 (73.08%)
FEMALE 389 (26.92%)

DROPPED MEMBERS

DECEASED	33
CLUB CANCELLED	0
OTHER	134
TOTAL	167

[CLICK HERE FOR CUMULATIVE MEMBERSHIP DATA](#)

TOTAL FAMILY UNIT MEMBERS	254
FAMILY MEMBERS PAYING HALF DUES	131